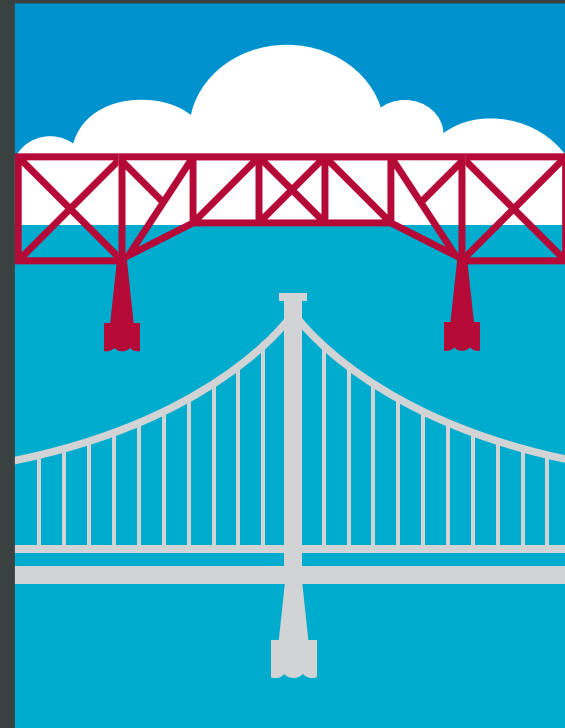


SCENIC HUDSON

Scenic Hudson’s leadership grant to Walkway Over the Hudson helped transform the Poughkeepsie Railroad Bridge into the world’s longest elevated park. The largest environmental group committed to preserving the Hudson Valley’s irreplaceable natural treasures, Scenic Hudson initially protected Franny Reese State Park – one of 40 parks and preserves it has created or enhanced throughout the region. Today it’s engaged in Saving the Land That Matters Most, a collaborative campaign to protect 65,000 acres of the highest scenic, ecological and agricultural significance.



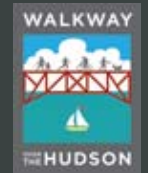
A TOURING GUIDE

IN PARTNERSHIP WITH:

- TOWN OF LLOYD
- NYS BRIDGE AUTHORITY
- NYS OFFICE OF PARKS, RECREATION AND HISTORIC PRESERVATION
- CITY OF POUGHKEEPSIE
- WALKWAY OVER THE HUDSON

CROSSING WALKWAY OVER THE HUDSON STATE HISTORIC PARK AND THE MID-HUDSON BRIDGE, THIS 3.6-MILE LOOP OFFERS THRILLING RIVER VIEWS AND CONNECTS RIVERSIDE PARKS, CULTURAL ATTRACTIONS AND HISTORIC POINTS OF INTEREST ON THE POUGHKEEPSIE AND HIGHLAND WATERFRONTS. ADDITIONAL LINKS PROVIDE EASY ACCESS TO 2.5 MILES OF NATURE TRAILS IN FRANNY REESE STATE PARK AS WELL AS MILES OF RAIL TRAILS IN ULSTER AND DUTCHESS COUNTIES.

PLEASE NOTE: THE MID-HUDSON BRIDGE IS OPEN TO PEDESTRIANS, WEATHER PERMITTING, FROM DAWN TO DUSK.



HIGHLAND

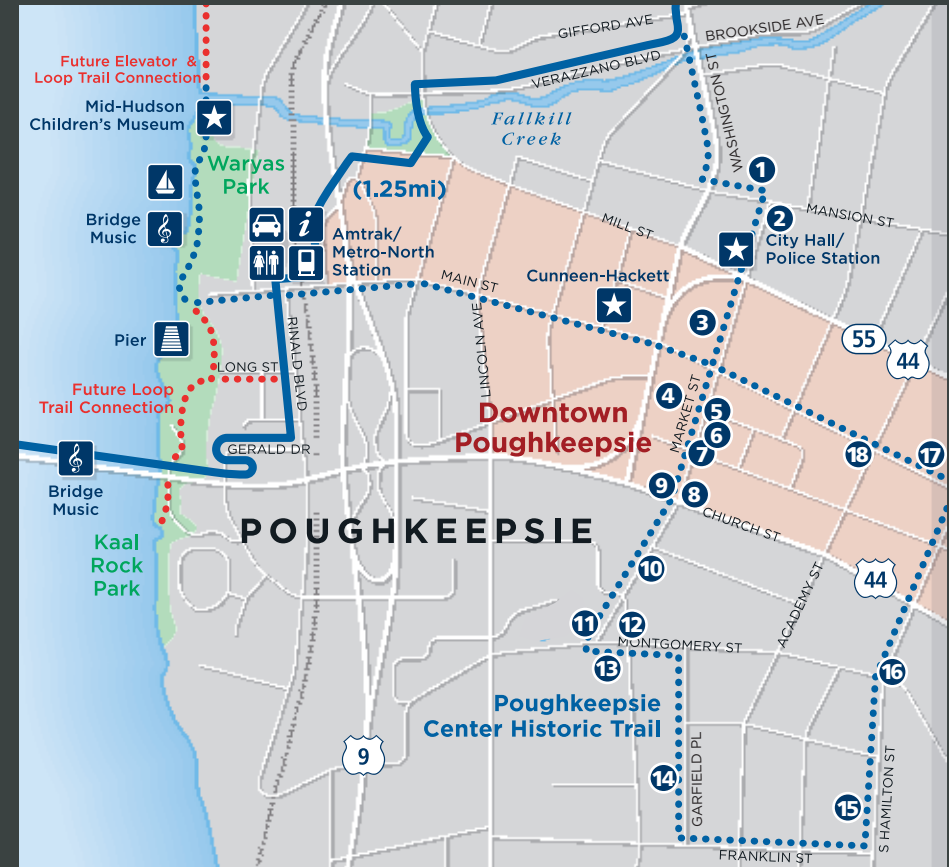
The commercial center of the Town of Lloyd, Highland is located in Ulster County on the west bank of the Hudson River where Walkway Over the Hudson State Historic Park meets the Hudson Valley Rail Trail and Franny Reese State Park. It's a rural, family-oriented community featuring apple orchards and plenty of open space with Illinois Mountain serving as a backdrop and the beautiful Black Creek Corridor accessible via the Hudson Valley Rail Trail. From waterfront dining to hiking and everything in between, Highland offers a small-town feel, yet is in close proximity to everything.



- 1 **Railroad Station** - West Shore Railroad completed in 1883
- 2 **Highland Landing** - A busy commercial district from the 1770s to the 1920s
- 3 **Mid-Hudson Hotel** - c.1845, also known as Simpson's Hotel and Cashdollar Hotel, brick section is oldest part of building
- 4 **Yelverton House** - 1754, oldest wooden building still standing in Ulster County, listed on National Register of Historic Places
- 5 **Philip Schantz House & Mill Site** - c.1845. A feed store was in the barns, mill was south of dam across road
- 6 **William Deyo's Sash and Blind Factory** - c.1855. A specialty sawmill
- 7 **Lloyd Hotel** - c.1825. Building later served as a store, today houses apartments
- 8 **Cider Mill** - Once owned by Lincoln Foods, apple cider has been pressed and processed here since about 1890
- 9 **Wilcox Store** - A house bought in 1866 by William Wilcox and greatly enlarged. Was a general store, later a newspaper office
- 10 **Wilcox-Carpenter-House** - c.1845. In addition to keeping a store, William Wilcox was an undertaker. Succeeded by Cliff Carpenter
- 11 **The 1891 Block** - These two commercial buildings replaced earlier ones that were destroyed in the great fire of 1891
- 12 **Methodist Church** - 1869. Brick building replaced a wooden church built here in 1821
- 13 **Ossie Building** - Fireproof building erected in 1988 on a site where buildings had been destroyed by fires in 1891, 1948 and 1979
- 14 **First National Bank of Highland** - Incorporated in 1900, the corner building was erected in 1923
- 15 **Colonel Jacob J. Hasbrouck House** - Built in 1846 out of sandstone quarried behind the house
- 16 **Pratt's Saw Mill** - Building that straddles the creek was erected in 1889. Business continued as a lumber yard until 1993
- 17 **Ezekiel Elting House** - c.1845. Later the residence of Clarence Elting (b.1860) and contractor Eugene Ossie

POUGHKEEPSIE

Nestled on the Hudson River, just 70 miles from both midtown Manhattan and Albany, the City of Poughkeepsie is the center of the arts, entertainment, higher education, health care, transportation, business and government for Dutchess County. Metro-North commuter trains run hourly to and from Grand Central Station. Whether it's to catch dinner and a show, play a round of golf, explore a small city rich in culture or relax in one of our many parks, see for yourself how natural beauty, history, strategic location, and plenty of forward-thinking people offer a balanced lifestyle and a sense of place.



- 1 **Poughkeepsie Post Office** - 1937, Dutch Colonial style. Franklin Roosevelt helped design. Five murals depicting Poughkeepsie's history highlight its interior
- 2 **Poughkeepsie Journal** - 1943, Dutch Colonial style. Third oldest newspaper in the U.S. and oldest in NYS (1785). Inside is a series of murals depicting the history of publishing
- 3 **Mid-Hudson Civic Center & Poughkeepsie Grand Hotel** - Concerts, exhibitions and public skating. Hotel houses a bar and restaurant
- 4 **Dutchess County Courthouse** - 1903, fifth courthouse. The third courthouse hosted the 1788 NYS Ratification Debates for the U.S. Constitution
- 5 **Former Smith Brothers Restaurant** - First established in 1847. Existed for almost 100 years. The famous recipe for Smith Brothers Cough Drops was developed here
- 6 **Poughkeepsie Savings Bank Building** - The site of Poughkeepsie's first chartered bank (1831). Present structure built 1912
- 7 **Bardavon 1869 Opera House** - The oldest continuously operating theater in NYS. It offers world renowned performances and hosts Hudson Valley Philharmonic Orchestra
- 8 **Old YMCA (Young Men's Christian Association)** - 1908. Constructed in a Renaissance Revival Style
- 9 **New York State Army** - 1891. Architect Isaac G. Perry. Continuously used for military training and local social events
- 10 **Adriance Memorial Library** - 1897. French Renaissance style. Near its front steps is a gun from the Civil War ironclad U.S.S. *Monitor* (1862)
- 11 **Fite House** - 1812. Architect Andrew Jackson Downing, father of landscape architecture in America
- 12 **Soldiers Memorial Fountain** - Dedicated July 4, 1870. Designed by I.P. Victor Andre; 26-foot-high working sculptural fountain
- 13 **Eastman Park** - Circa 1870s. Today the park hosts multiple events yearly
- 14 **Garfield Place National Historic District** - Created 1836, for upscale homes to have a hilltop view of the Hudson River. In 1881, renamed to memorialize the assassination of President Garfield
- 15 **Captain John H. Brinkerhoff House** - Circa 1880. Home of prominent steamboat owner of the *Mary Powell*. The house design resembles a steamboat prow
- 16 **Vassar-Warner Home** - 1871. Greek Revival style. Home for senior residents
- 17 **The Chance Theater** - Opened in 1912 as the Dutchess Theater, changed eight times, including a vaudeville theater. Today an entertainment complex
- 18 **Luckey Platt Building** - 1923. Classical Revival style. Designed by Percival Lloyd. The former department store (1845-1980), has been newly renovated for multi-use