

2 0 1 3 A N N U A L R E P O R T



**SCENIC
HUDSON**

land ■ parks ■ advocacy

CONNECTING THE DOTS

SH50
1963-2013

OUR VISION FOR THE FUTURE



“Scenic Hudson’s contribution to preserving and restoring this river and this valley is staggering. I don’t even want to think what it would be like without them.”

—Renowned photographer Annie Leibovitz,
who created a special project celebrating our 50th anniversary

Scenic Hudson has just completed a year of outstanding achievements and celebrations to mark our 50th anniversary. Now we’re embarking on a bold plan for the future.

During our first half-century, we’ve made tremendous progress in preserving more than 30,000 acres of land, opening public access to the river in many communities, conserving six dozen farms and warding off countless bad developments that threatened the fabric of the region. We also have advanced scientifically grounded principles to guide waterfront development in the age of climate change and assumed a leadership role in catalyzing and securing funding for “green” development.

We owe these successes to the hard work and skill of a passionate staff and board and their clear-sighted recognition that collaboration is the key ingredient to progress. None of this would have been possible without your financial support and active participation in our advocacy, land preservation and park development efforts.

Moving forward, our goal is to build strategically on these remarkable accomplishments and achieve results on an even greater scale.

During the decade ahead, we will connect the dots among our assemblages of protected properties, leveraging our conservation investments to create more direct and tangible public benefits. In addition, we will:

- Link our conserved lands to village and urban centers, mass-transit hubs and hospitality businesses to reinforce the region’s recreation-, agriculture- and tourism-based economy;
- Roll out our farmland preservation program to the entire Hudson Valley, while generating support in New York City and the philanthropic community for a foodshed-wide campaign;
- Build on the town-by-town strategy for climate-change adaptation to reimagine our riverfronts and achieve region-wide impacts; and
- Continue to collaborate with partner organizations and citizens as an environmental watchdog of the river on major projects affecting its health and beauty.

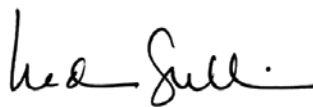
All of this work will draw on Scenic Hudson’s unique strengths and our multifaceted capabilities as a regional powerhouse in preserving and developing the natural and recreational resources in New York City’s great, green backyard. It also will depend on your continued support, for which we are so grateful.

John Burroughs fanned the flames of America’s early conservation movement through his nature essays, many written at his rustic retreat in the Hudson Valley and inspired by lands we’re protecting along Ulster County’s Black Creek. He once proclaimed: “If you think you can do it, you can.”

Our plans for Scenic Hudson’s sixth decade are ambitious, but we know that together we can accomplish them.



James C. Goodfellow, Board Chairman



Ned Sullivan, President





We're leveraging our conservation investments and maximizing their public benefits by linking Scenic Hudson parks and protected lands with trails, downtowns, mass-transit hubs and hospitality businesses—enhancing the region's quality of life and economic vitality.

Latest successes

A trail easement acquired on the historic Cat Rock estate in **Philipstown**, Putnam County, joins two previously unconnected portions of Hudson Highlands State Park, enhancing opportunities for hiking, snowshoeing and bird watching.

In **Fishkill**, Dutchess County, we partnered with the Hudson Highlands Land Trust to conserve 51 acres—the last key unprotected property on Fishkill Ridge's western slope. Containing a popular campground, the property creates the potential for new public trails affording spectacular Highlands views.

We're spearheading the collaborative, citizen-driven initiative to create a nine-mile Hudson Highlands Fjord Trail, linking the train stations and downtowns in **Cold Spring**, Putnam County, and **Beacon**, Dutchess County. The route will provide safe, off-the-road access to popular Highlands trailheads—including America's most popular day hike, Breakneck Ridge—and eventually could extend to Newburgh. The trail is in the master plan phase: grants for its implementation are pending before New York State.

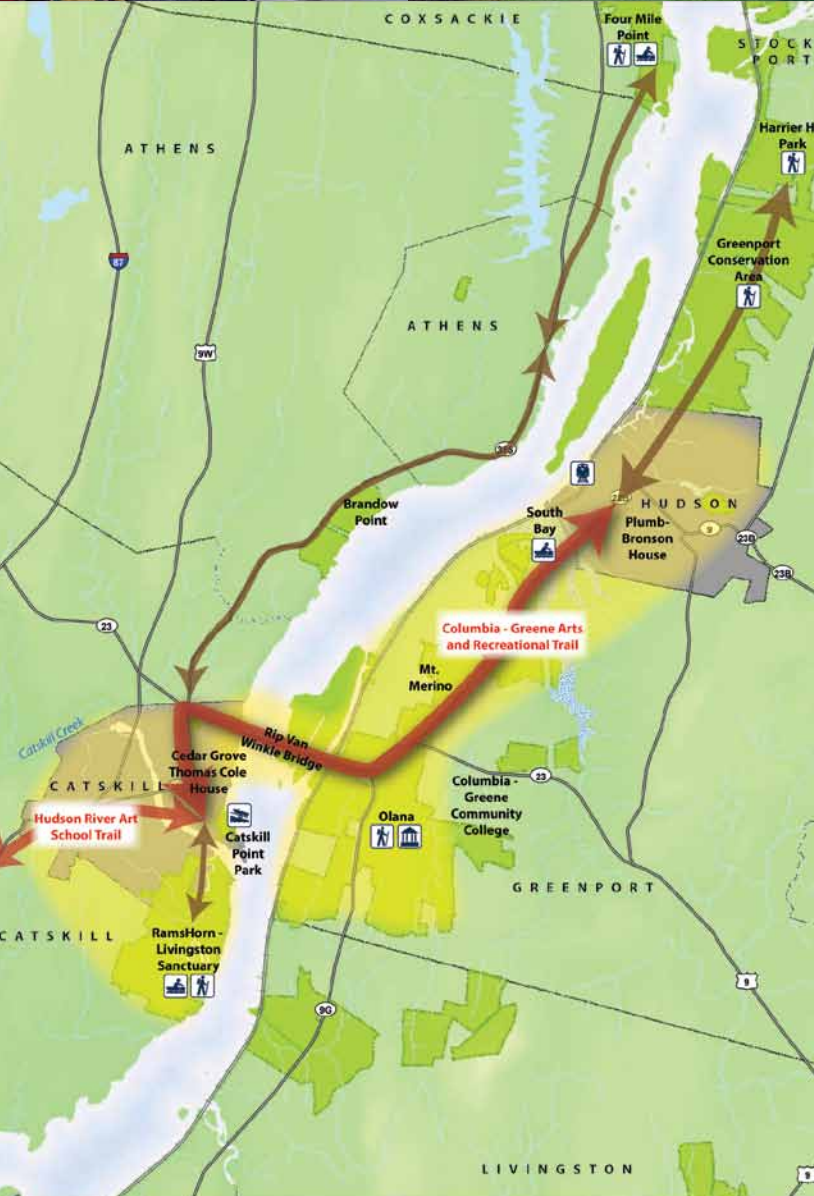
Support from our planning experts also was critical in completing the 4.5-mile Beacon Loop Trail. From the city's waterfront train station (and Scenic Hudson's Long Dock Park), it follows the Klara Sauer Trail to Denning's Point State Park and our Madam Brett Park before heading to Beacon's bustling Main Street.

In **Esopus**, Ulster County, we purchased 216 acres essential for linking our Shaupeneak Ridge preserve with the John Burroughs-Black Creek Corridor, a proposed eight-mile hiking and paddling route along the tributary. (We've already preserved more than 1,300 acres needed to complete the trail.) Also in Esopus, we protected 107 acres—half by purchase, half via conservation and trail easements—doubling the size of our Esopus Meadows Preserve. Visitors will enjoy access to half a mile of unspoiled Hudson shoreline offering outstanding river views.

And in **New Baltimore**, Greene County, our acquisition of nine Hudson Riverfront acres on Bronck Island, combined with conservation and trail easements on 59 acres, will enable the public to reach a secluded shoreline previously available only to paddlers.



CONNECTING THE DOTS: Blazing a Hudson-Catskill trail



In Columbia County we've protected over 1,500 acres in the Olana viewshed, including much of Mount Merino and 320 ecologically important acres in the South Bay watershed near Hudson. Across the Hudson River in Catskill, Greene County, we helped prevent the demolition of historic buildings on the village's Main Street and created (with Audubon New York) the 480-acre RamsHorn-Livingston Sanctuary, providing access to one of the Hudson River's largest tidal swamp forests.

At the same time, an influx of artists attracted to these two downtowns is spurring great economic revitalization. New shops, restaurants, galleries and farmers' markets—as well as excellent cultural offerings—have turned both communities into prime tourist destinations. Now we're engaged in connecting all of these treasures.

The 13-mile **Columbia-Greene Arts & Recreational Trail** will stretch from Hudson's busy Warren Street (and Amtrak station) through the fields and forests we've protected. Hikers can head uphill to admire Frederic Church's Olana before crossing the Rip Van Winkle Bridge to the National Historic Landmark home of Church's mentor, Thomas Cole. Then they can enjoy amenities on Catskill's Main Street and its riverfront park before spotting bald eagles at RamsHorn-Livingston Sanctuary.

Currently we're engaging with government and nonprofit partners to increase the pace of the initiative's success. Simultaneously, we're seeking to protect lands necessary to complete the trail, which promises to be a vital addition to the two counties' combined \$240-million tourism economy.



Left: The Columbia-Greene Arts & Recreational Trail will cross this newly protected land in Greenport.
Above: The trail will link attractions in Hudson (top) and Catskill (bottom)





Scenic Hudson's parks and projects in Yonkers, Sleepy Hollow and Peekskill have opened public access to the river, catalyzed waterfront and downtown development, and filled in key segments of the Greenway Trail and Westchester RiverWalk.

Latest successes

Scenic Hudson continued to build on collaborative successes in **Yonkers**, Westchester County, by helping direct funding to downtown businesses and projects relating to the **daylighted Saw Mill River**. As a member of Governor Cuomo's Mid-Hudson Regional Economic Development Council, Scenic Hudson President Ned Sullivan successfully advocated for funding to daylight a second segment of the river and for redevelopment of an adjacent derelict building for lofts and a restaurant. Earlier this year a Chinese firm invested almost \$10 million in a biopharmaceutical company located adjacent to the daylighted river—in part the result of Scenic Hudson's collaborative efforts to promote the Hudson Valley and Yonkers as locations for promising "green business" opportunities.

In **Sleepy Hollow**, Westchester County, we built on our renovation of the Kathryn W. Davis RiverWalk Center, assisting our partner Teatown Lake Reservation to launch environmental-education programming there. And we worked with resident activists to begin transformation of the nearby Peabody Preserve into an "outdoor classroom."

In **Peekskill**, also in Westchester, work soon will get underway to create a new waterfront park on property jointly owned by the city and Scenic Hudson. Located adjacent to the newly renovated train depot, the park is a critical component of Peekskill's transit-oriented waterfront redevelopment plan and a link in the Westchester RiverWalk, spanning to Yonkers.



BORING MILL BACK SHOT WATER WHEEL

DO NOT CLIMB



CONNECTING THE DOTS: Creating a great new tourism destination



Visitors to Cold Spring can step off a Metro-North train and right into our Foundry Dock Park. The same holds true in Beacon: Long Dock Park is a short walk from the Metro-North station, while Madam Brett Park is just a mile away via the Klara Sauer/Beacon Loop Trail that parallels the river.

Joining these gems is **West Point Foundry Preserve**, newly reopened after a 15-month, \$3.6-million construction project. A universally accessible trail beginning at the Cold Spring station leads past beautiful Foundry Cove to the park, where we've created an "outdoor museum" that recounts the site's history and enhances its natural splendor. West Point Foundry produced some of America's first locomotives and steam engines, and Parrott guns—cannons that helped win the Civil War. Exciting new interpretive features help visitors imagine the ironworks' enormity and the working people who made this an industrial powerhouse. And a Web-enabled tour (www.foundrytour.org) brings the foundry's sights and sounds to life.

New trails pass the foundry's remains, which we protected from development in 1996, and lead to shops, museums, restaurants and inns in downtown Cold Spring. The preserve also will be a destination on the **Hudson Highlands Fjord Trail**, spanning to Beacon. And an informational panel suggests additional Highlands attractions, including Scenic Hudson parks, providing visitors with good reasons to return.



Left: Sculptural representation of West Point Foundry water wheel helps visitors grasp the ironworks' massive size. Above: Trails link preserve features (top) with other Highlands destinations (bottom)





We're expanding our collaborative farmland protection initiative to conserve the most productive farms throughout the Hudson Valley, while exploring ways to enhance and create new food-distribution networks.

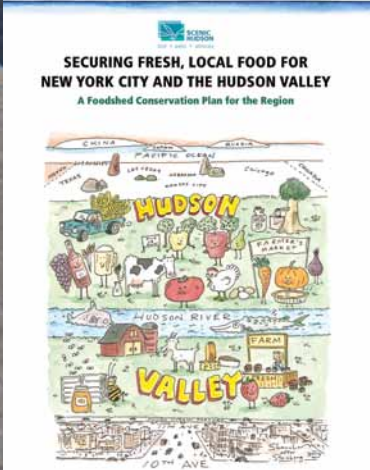
Latest successes

Partnering with farmers, the Columbia Land Conservancy, Dutchess Land Conservancy, Dutchess County, the Town of **Red Hook** and USDA-Natural Resources Conservation Service, we protected seven family farms in Dutchess and Columbia counties spanning nearly 1,250 acres. The farms include leading suppliers of fresh food and dairy products to local and New York City markets. Our third collaborative farmland project is on target to be completed by next spring.

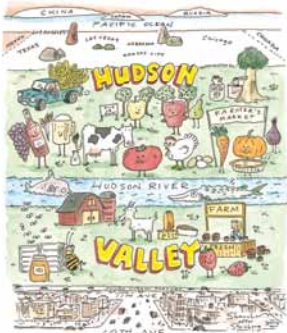
We issued two groundbreaking reports—both underwritten by the Doris Duke Charitable Foundation—that are building momentum for protecting the valley's "must-save" farmland. "Securing Fresh, Local Food for New York City and the Hudson Valley: A Foodshed Conservation Plan for the Region" prioritizes unprotected farmland throughout the valley, allowing stakeholders to focus on preserving those agricultural lands most critical for meeting increasing demands for local food. It's believed to be the first-ever study utilizing a comprehensive, data-driven methodology for conserving a metropolitan area's "foodshed."

Our second report lays out a strategy for tapping new funding to protect farms. It shows how communities could leverage loans from the state Environmental Facilities Corporation to conserve farmland that also safeguards drinking-water supplies. This would enable municipalities to achieve multiple benefits with scarce public dollars and bring a potent new partner to the table.

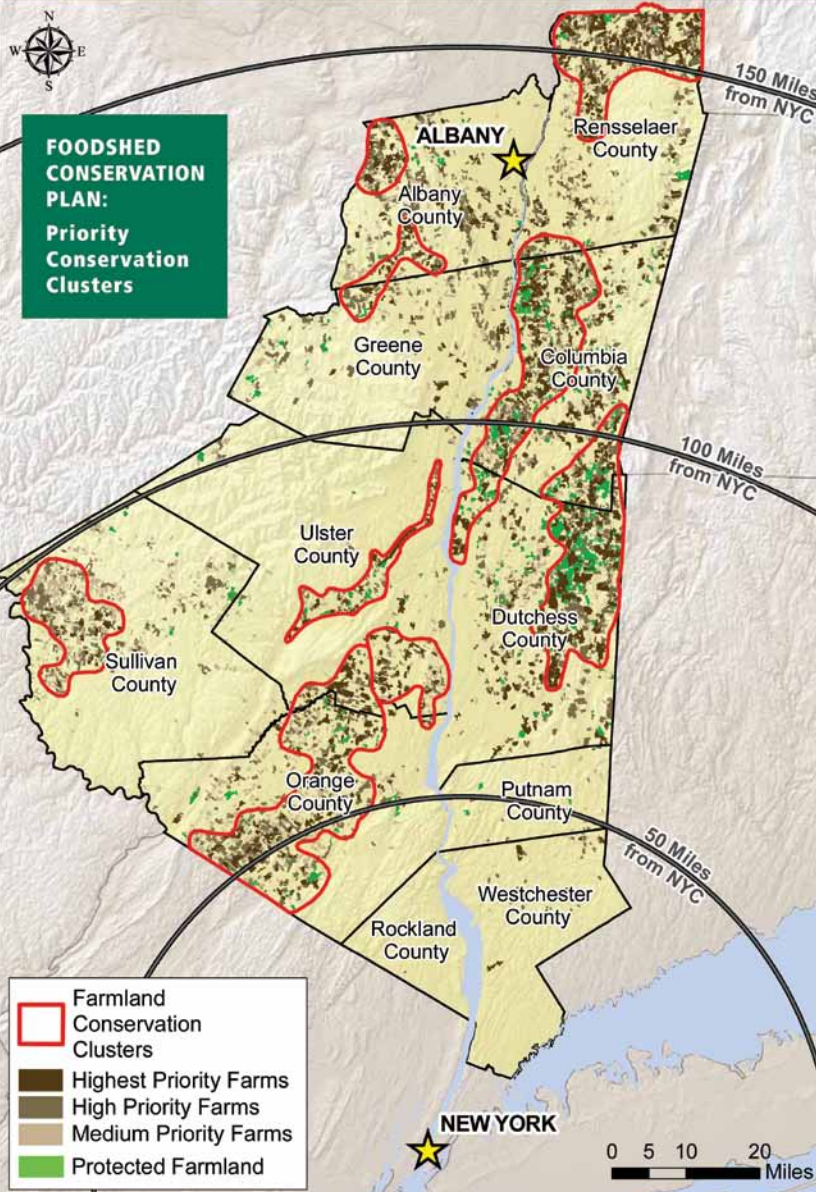
Scenic Hudson also has become a founding member of the Hudson Valley Food & Beverage Alliance. Launched by the Hudson Valley Economic Development Corporation, it unites food businesses, farmers, beverage makers, distributors and others engaged in expanding the region's \$800-million agricultural economy.



**SECURING FRESH, LOCAL FOOD FOR
NEW YORK CITY AND THE HUDSON VALLEY**
A Foodshed Conservation Plan for the Region



CONNECTING THE DOTS: Ramping up farmland protection



Since 1996 Scenic Hudson has invested \$20 million of our own funds and leveraged more than \$15 million from public and private sources to protect nearly 11,000 acres on 72 working farms, conserving a “critical mass” of productive land in communities with agriculture-dependent economies. We’ve forged innovative partnerships to increase farmland protection and initiated conversations about how to get more food from farm to table. Now we’ve rolled out our New York City/Hudson Valley **Foodshed Conservation Plan** (www.scenichudson.org/foodshedplan).

Statistics bear out the need for a strategic, valley-wide blueprint for farmland protection: Although New York City already has a \$600-million-plus annual unmet demand for regionally produced food, the state continues to lose one farm every 3½ days. Just as bad, 70 percent of America’s farmland will change hands in the next 20 years, as farmers retire.

Utilizing GIS technology and the latest soil-quality data, we’ve identified nine “conservation clusters” that have the greatest density of farmland ranked “highest priority” to conserve—163,673 acres on 614 farms. The plan estimates the cost of acquiring conservation easements on this land, which will make it more affordable for the next generation of farmers, at \$720 million.

The plan has garnered much media attention throughout the valley and New York City, and support from farmers and others in the agricultural community. Perhaps most significant, it’s been recommended for inclusion as a priority of New York’s 2014 Open Space Conservation Plan. We’re now building alliances with farm, food and public health organizations, as well as public officials in the region and New York City. The plan strongly suggests the city and other stakeholders should develop programs to protect the foodshed. It also urges added support from foundations and high-impact investors. And it stresses that with Hudson Valley land values relatively low compared to other areas, now is the time to act.



Left: Our Foodshed Conservation Plan (inset) seeks to protect more farmland critical to increasing supplies of fresh, local food sold at New York City GreenMarkets

• Single men will soon be the new majority
• Echo Boomers are 1/3 of the population
• Older Americans will outnumber younger by 2050
• Nearly half Americans will be non-white by 2050
• Supply of large lot suburban homes





We're building on our successful town-by-town strategy to help communities adapt to impending sea level rise so we can achieve region-wide impacts.

Latest successes

The online sea level rise mapping tool we've developed has attracted widespread media attention and interest from local leaders whose waterfronts face higher tides and storm surges like those experienced during Tropical Storm Sandy. The maps, available at www.scenichudson.org/slr, enable communities to pinpoint neighborhoods and even individual streets vulnerable under various flooding scenarios.

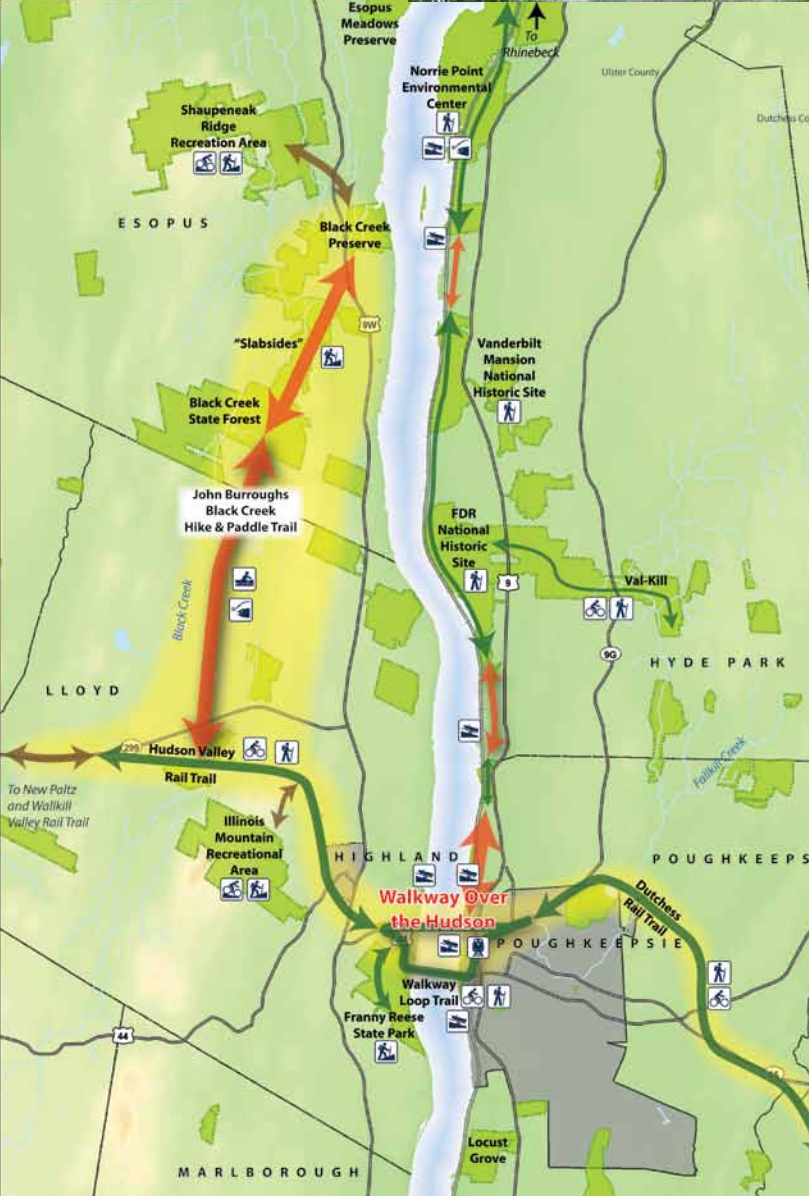
The Kingston Waterfront Flooding Task Force we organized with the state Department of Environmental Conservation Hudson River Estuary Program and Department of State, along with the City of **Kingston**, Ulster County, has completed its work. After engaging in the collaborative planning process outlined in Scenic Hudson's award-winning guide, *Revitalizing Hudson Riverfronts*, property owners, city officials and concerned citizens identified steps to make the city's Hudson River and Rondout Creek waterfronts more flood-resilient while enhancing economic opportunity, public access, safety and water quality. The task force has submitted its recommendations to the city and outlined federal funding sources available to implement them.

Building on this success, we've begun similar collaborative initiatives in two more at-risk riverfront municipalities—**Piermont**, Rockland County, and **Catskill**, Greene County. We're also sharing strategies with other valley communities via our "Riverfront Action" e-newsletter, published several times a year.

Scenic Hudson's Long Dock Park in **Beacon**, Dutchess County, now is a nationally recognized model of sustainability. It has been awarded a three-star rating (out of a possible four) by the Sustainable Sites Initiative™ (SITES), a national rating system for sustainable landscapes. It's one of only 15 U.S. parks to achieve SITES certification to date. In addition, the park's River Center and kayak pavilion have received a LEED Gold rating (Leadership in Energy & Environmental Design) from the U.S. Green Building Council for their green features.



CONNECTING THE DOTS: Spreading Walkway's success



Scenic Hudson believed the mantra from *Field of Dreams*, "If you build it, they will come," would apply to Walkway Over the Hudson. That's why we invested \$1 million in it. In fact, the Walkway attracts 500,000 people annually. Now we want visitors to *go*—beyond the span—and explore the region's extensive rail trail system and other nearby destinations like Franny Reese State Park and Illinois Mountain (both of which we created). The goal is to increase support for revitalization efforts in the two communities linked by the span.

Partnering with the Dyson Foundation, the Walkway and the Dutchess Regional Chamber of Commerce, we've spearheaded a new branding plan for the **Greater Walkway Region**, encompassing Poughkeepsie (Dutchess), Lloyd (Ulster) and recreational and cultural attractions a short drive from the bridge, including the FDR-Vanderbilt National Historic Sites, whose magnificent views we helped protect. New signs, brochures and an app will direct Walkway visitors to places to eat and shop, galleries, house museums and parks.

We also led planning and zoning efforts that will guide redevelopment around the Walkway's approaches, or gateways. Both Lloyd and Poughkeepsie recently adopted this new **Walkway Gateway** zoning, the first step in creating walkable neighborhoods where people can live, work and have fun.

Research indicates we develop our first impressions of a place in one-tenth of a second. These vibrant new gateways will present their communities' best face to the world, encouraging Walkway visitors to keep on walking and contributing more to our local economies.



Left: Trails at Franny Reese State Park link to the Walkway. Above: New branding will attract Walkway visitors to nearby destinations (top); simulation of potential Walkway Gateway redevelopment (below)



We remain a leading environmental watchdog, working with partners to ensure major projects all along the river positively impact its health and beauty.

Latest successes

In March Scenic Hudson and Riverkeeper reached agreement with the state on significant measures to mitigate potential harm to the Hudson from construction of the new **Tappan Zee Bridge**—including establishment of a \$10-million fund for projects to enhance water quality, restore wetlands and replace disturbed habitats, and a \$1.5-million waterfront revitalization fund for impacted communities.

The 173 acres we recently conserved within the South Bay watershed in **Greenport**, Columbia County, safeguards the aquifer supplying the town's primary drinking-water source and preserves spectacular Olana views. A conservation easement donated by a foresighted landowner on 16 acres in **Rhinebeck**, Dutchess County, protects more than half a mile of shoreline along two biologically important tidal wetlands. Both properties will accommodate species whose habitats face inundation from sea level rise in the Hudson. Another recent easement has enabled us to protect 124 ecologically important acres in **New Baltimore**, Greene County, that also feature in superb Catskills vistas.

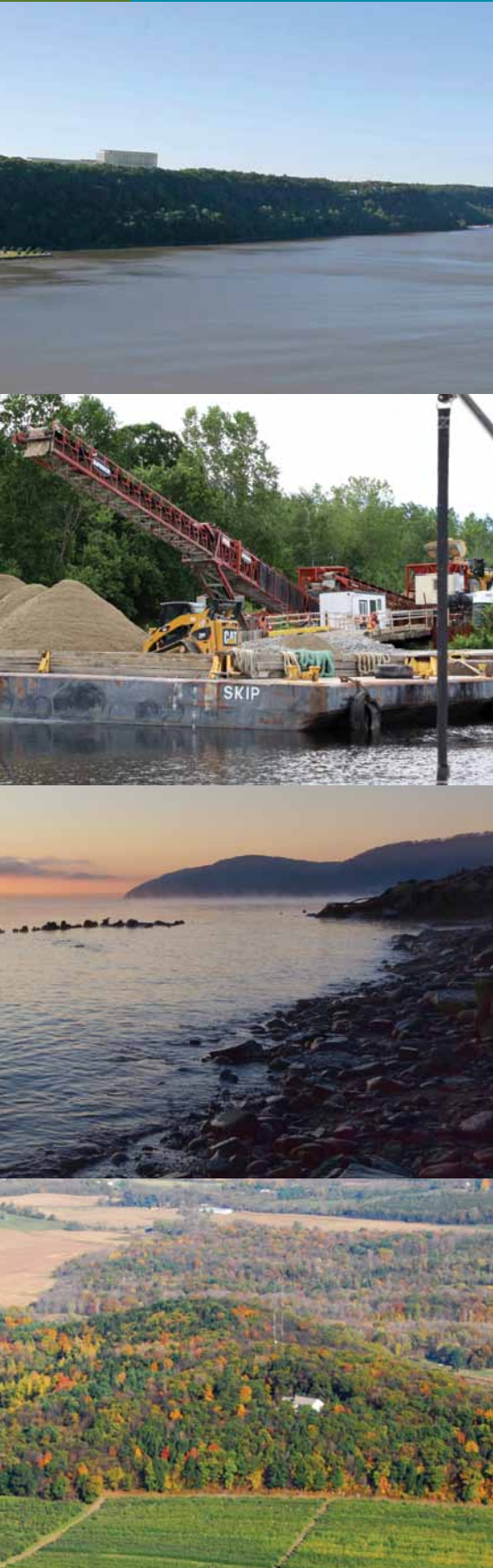
CONNECTING THE DOTS: Continuing our river crusade

Since our successful campaign to protect Storm King Mountain, Scenic Hudson has been at the forefront of collaborative efforts to halt bad projects all along the Hudson—from the massive St. Lawrence Cement plant near Hudson to proposed high-rises in Yonkers that threatened to destroy iconic vistas and block riverfront access.

Our work as a leading environmental watchdog continues—from atop the magnificent **Palisades**, where we're trying to stop LG Electronics from constructing a 143-foot-tall building that would mar vistas of this National Natural Landmark, to beneath the upper Hudson, where we're pushing GE to broaden the scope of its ongoing **PCB cleanup**. As always, we're not only fighting bad ideas but offering responsible alternatives. LG has space to build a longer, lower structure. And the more contaminated sediments GE removes now, the quicker the Hudson and its habitats will recover, and the sooner communities can take advantage of new investments projected to create up to 4,000 jobs.

Elsewhere, in Rockland County we're spearheading grassroots efforts to halt construction of a costly, energy-intensive **water desalination plant** that would adversely impact Haverstraw Bay, a prime fish nursery and breeding ground, and burden consumers with rising water rates. We contend the county's water demands could be met through conservation and efficiency measures. And in Columbia County, where a 190-foot communications tower has been proposed for the summit of **Blue Hill**—prominently visible from Olana—we're seeking a compromise that will enhance emergency services while preserving the experience for Olana's visitors, who generate nearly \$8 million annually for the local economy.

As we embark on our sixth decade of progress, we're emboldened by the can-do spirit of Scenic Hudson's founders, who refused to stop until the job was done right.





Consolidated results for Scenic Hudson and The Scenic Hudson Land Trust for the fiscal year ending June 30, 2013, show total operating expenses were \$23.5 million, up from \$14.1 million spent in FY12.

Scenic Hudson

Expenses totaled \$5.9 million, a 3.4-percent increase over the prior year, and operating revenues totaled \$6.3 million, an 8.3-percent increase over the previous year. Monies were spent to protect lands vital to clean water, wildlife and working farms; to create beautiful public parks; to assist communities with planning for appropriate growth; and to pursue the historic cleanup of Hudson River PCBs.

Consolidated Statement of Financial Position

	June 30, 2012	June 30, 2013
Land areas (at cost)	59,895	53,775
Cash and investments	155,759	172,716
Other assets	25,250	23,847
Total assets	240,904	250,338
Liabilities	7,248	7,011
Net assets	233,656	243,327
Total liabilities and net assets	240,904	250,338

[in thousands]

The Scenic Hudson Land Trust

Expenses totaled \$19.2 million, including \$6.3 million to build and maintain public parks and \$10.2 million to purchase 13 conservation easements.

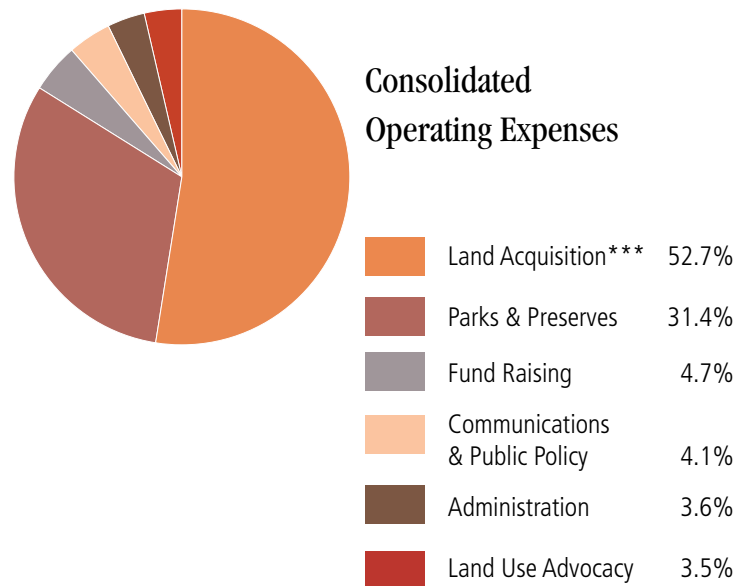
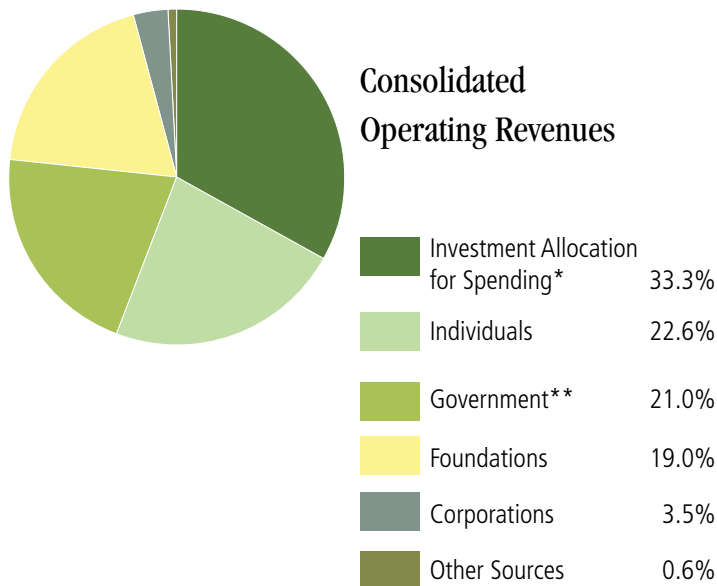
In addition, the land trust spent \$3.8 million to acquire and conserve seven properties in fee title. In FY13, the land trust protected 2,150 acres through acquisitions and conservation easements.

Financial Structure

Scenic Hudson maintains three endowments: The Lila Acheson and DeWitt Wallace Hudson Valley Land Preservation Endowment (\$143.8 million at year-end FY13), used to support land conservation activities; a board-designated fund for general operating expenses (\$13.1 million at year-end FY13); and an Easement Enforcement Fund (\$1.2 million at year-end FY13). The assets are pooled in a diversified portfolio supervised by an investment committee. Total investment return was 14.2 percent for FY13. The board approved \$6.6 million in spending from the endowments for the year (5 percent of the past 12 quarters' rolling average value).

Although lands owned by the land trust are eligible for tax exemption, Scenic Hudson paid \$223,124 in property taxes and payments in lieu of taxes in FY13 and \$245,236 in FY12. Scenic Hudson generally seeks relief from taxes at the first opportunity following acquisition of the property.

The board engages Marks Paneth & Shron, LLP, to perform an independent annual audit, which is available on our website.



* The vast majority of investment allocation for spending supports land acquisition and parks creation. ** The majority of revenues from government provide capital for farmland and open space preservation and parks. *** Including Conservation easements.

Hudson River Stewardship Society

INDIVIDUALS WHO HAVE INCLUDED SCENIC HUDSON IN THEIR ESTATE OR LONG-TERM FINANCIAL PLANS

Anonymous (10)
Peter and Jo Baer
Barry A. Benepe
Benson Blake, Jr.
Patricia Carroll-Mathes
Joseph Chapman, Jr.
Christopher and Sharon Davis
Mr. and Mrs. Irvine D. Flinn
Donald W. Fowle
Aimee J. Frank
Dr. and Mrs. Herbert E. Gade
Kristin Gamble
Anna Carlson Gannett
Joan C. Gilson
William Lockridge Harris
Marjorie and Gurnee Hart
Leon T. Hopewell
Joyce L. Hunt
Anne E. Impellizzeri
Harry A. Jacobs, Jr.
Joseph Kazlauskas
Father Thomas Kiely
Aleta Kinley
Mr. and Mrs. Frank Martucci
Marian McEvoy
Ronald J. McGowan
W. Patrick McMullan
Brenda Melstein
David H. Mortimer
Barbara A. Murphy
Frederick Osborn III
Elizabeth B. Pugh
David N. Redden
Frederic C. Rich
Richard D. Rockwell
John H. Steinberg
Ned and Tara Sullivan
Stephen W. Tator
Maris M. Van Alen
Dawn Watson
Whelock Whitney III
Alexander E. Zagoreos

2013 Contributors

INDIVIDUALS WHO MADE GIFTS BETWEEN JULY 1, 2012, AND JUNE 30, 2013

Gifts of \$500,000 and above

Kathryn W. Davis
The Diana Davis Spencer Foundation
James and Susan Goodfellow *
Mr. and Mrs. Frank Martucci
W. Patrick McMullan and Rachel McPherson *
The Pew Charitable Trusts
Frederic C. Rich *
Shelby Cullom Davis Charitable Fund *

Gifts of \$100,000-\$499,999

Anonymous (3)
André Balazs *
Benjamin Moore & Co. *
Christopher Buck *
James B. Clark and Sandra Guenther Clark

Andrea Soros Colombel
Mr. and Mrs. John P. Curran *
Christopher and Sharon Davis
Doris Duke Charitable Foundation
Dyson Foundation
Sean Eldridge and Chris Hughes
The G. Unger Vetlesen Foundation *
Goldman Sachs Gives
Dr. Peter Hofmann and William Burbach *
Steven L. Holley *
Hudson River Foundation
Richard H. Klapper and Helena Lee *
Nancy F. Perkins
The Peter and Carmen Lucia Buck Foundation
The Mr. and Mrs. Raymond J. Horowitz
Foundation for the Arts *
Sarah K. de Coizart Article TENTH
Perpetual Charitable Trust *
Jennifer Speers
The Walbridge Fund
Dr. Lucy Waletzky

Gifts of \$50,000-\$99,999

The 1772 Foundation, Inc.
Harney & Sons Fine Teas
The Jane W. Nuhn Charitable Trust *
Land Trust Alliance
Chip Loewenson and Susan Brune *
Evan Mason and Garrard Beene/
Colyton Foundation *
David H. Mortimer/Mary W. Harriman
Foundation
Red Crane Foundation *
The William and Mary Greve Foundation, Inc. *
The William Randolph Hearst Foundations

Gifts of \$25,000-\$49,999

Anonymous (2)
Con Edison
Cornelius King Charitable Trust
Sarah A.W. Fitts
John and Christine Fitzgibbons
Kristin Gamble and Charles Flood
Betsy and Larry Gile * +
The Krupp Family Foundation
Susan Livingston
Judith McHale and Michael O'Halloran
Jonathan Z. McKown and Calvin Tsao
David K.A. Mordecai and
Samantha Kappagoda
The Peter Jay Sharp Foundation
Alexander S. Reese and Alison Spear
Jonathan Rose/Jonathan &
Diana Rose Lost and Foundation *
Leigh Seippel and Susan Patterson
Thalle Industries, Inc.
Julia N. Harte Widdowson and
Nigel Widdowson/Field-Day Foundation
Wildlife Conservation Society
The William Bingham Foundation *

Gifts of \$10,000-\$24,999

Anonymous (1)
Austen-Stokes Ancient Americas
Foundation, Inc.
The Bay and Paul Foundations
Scott and Roxanne Bok
Charles Gamper Fund *
Davada Family Foundation
Mr. and Mrs. Robert G. DeLaMater *

Michael P. Dowling/The Dowling Foundation *
Mr. and Mrs. Daniel J. Ehrlich/Daniel J. and
Edith A. Ehrlich Family Foundation
The Eileen Fisher Foundation
Mr. and Mrs. Irvine D. Flinn
Robert P. Freeman and Inge Jackson Reist
Dr. and Mrs. Herbert E. Gade
Gary and Beth Glynn
Carlos A. Gonzalez and Katherine G. Stewart
Wendy Gordon and Larry Rockefeller
Marjorie and Gurnee Hart
Estate of Alice M. Hoecker
Merit E. Janow and Peter Young +
Johnson Family Foundation
Christine Lehner/Orchard Foundation
Mr. and Mrs. Roger Liddell
Marilyn M. Simpson Charitable Lead Trusts
Friedrike Merck
The Nature Conservancy
Mr. and Mrs. Mark Ordan
Ambassador and Mrs. Nicholas Platt
Mr. and Mrs. David N. Redden
The Richard W. Rupp Foundation
Simon Roosevelt and Lolita Echavarría
Marilyn Spilke
TD Charitable Foundation
Lawrence Tian
Tortuga Foundation
The Vidda Foundation
Dawn Watson
Whelock Whitney III

Gifts of \$5,000-\$9,999

Anonymous (7)
American Conservation Association, Inc.
George and Phebe Banta
Carolyn Marks Blackwood/
The Marks Family Foundation
Mr. and Mrs. Peter Boodell
Judith M. Buechner
Mr. and Mrs. David C. Clapp
Joseph Cotter/Tarrytown Waterfront I, LLC
Katie Couric
The David Rockefeller Fund, Inc.
Joan K. Davidson/The J. M. Kaplan Fund, Inc.
Ingrid and Stephen Dyott
Jacob and Monica Frydman
Francis Greenburger
Donald Gummer and Meryl Streep/
Silver Mountain Foundation for the Arts
Andrew S. Gundlach
Jen Hand and Tom Tierney
John Heist and Michael Neumann
Mr. and Mrs. Fred Herlitz
The Lucius N. Littauer Foundation, Inc.
The M&T Charitable Foundation
Normandie Foundation, Inc.
Oram Foundation, Inc.
Thomas Remien and Mary Anne Hunting
Royal Bank of Canada
Sarah I. Schieffelin Residuary Trust
Rebecca J. Simmons
J.E. Slaughter
John Habich Solomon and Andrew Solomon
David Swope
Andre Tchelitcheff
TD Bank
Mr. and Mrs. Maarten van Hengel
The Vervane Foundation
Peter A. Vlachos

Stephanie G. Wheeler
Mr. and Mrs. Alexander E. Zagoreos

Gifts of \$3,000-\$4,999

Neil Bender
Bull's Head Foundation, Inc.
Mr. and Mrs. H. Rodgin Cohen
Gale Epstein
Mr. and Mrs. William M. Evarts, Jr.
Harry A. Jacobs, Jr.
Douglas Land and Victoria Peebles/
The Land Family Foundation
Jean-Pierre Latriille and Yolanda Willmore
Eliot Spitzer
Mr. and Mrs. David J. Stern
Ned and Tara Sullivan

Gifts of \$2,500-\$2,999

Anonymous
Madison Cox
Michael J. Del Giudice and Jayne Keyes
Lawrence Divney and Alicia Vergara
Richard H. Jenrette/The Richard Hampton
Jenrette Foundation, Inc.
Key Interiors, LLC
Wendy Maitland
Richard L. Menschel/Charina Foundation, Inc.
Mark Jay Menting and Laura Jean Wilson
David Orentreich/
The Orentreich Family Foundation
Orthopedic Associates of Dutchess County
Andrew Sabin
Mr. and Mrs. Andrew P. Sidamon-Eristoff
John and Dorothy Sprague/
John and Dorothy Sprague Foundation
Tilcon New York, Inc.
Jann Wenner and Matthew Nye

Gifts of \$1,000-\$2,499

Anonymous (6)
American Sugar Refining, Inc.
Ralph Arditì and Robin A. Shelby Arditì
Naja R. Armstrong
Mr. and Ms. Josh Aronson
The Atlantic Philanthropies Director/
Employee Designated Gift Fund
Peter and Jo Baer
Sybil K. Baldwin
Didi and David Barrett
Sunny Bates
Phoebe P. Bender
Mr. and Mrs. Thomas R. Berner
Raoul Bhavnani
Robert S. Buford and Barbara Iason
Jay and Thea Burgess
Mr. and Mrs. Jerome A. Chazen/
The Chazen Foundation
Kimberly K. Conner and
Nicholas P. Groombridge
James D. Cross
Lynda Shenkman Curtis
Mr. and Mrs. John A. Dimling
Divney Tung Schwalbe, LLP
Augusta and Mark Donohue
Michael DuPree and Michael Fleischer
Vince Errico
P. Amy Feind and Douglas Reeves
Laura Ferrara
Jeanne Donovan Fisher
Philip Gallo and Victorio Corral

Anna Carlson Gannett
Pete Gergely and Val Pierotti
Alan Ginsberg
Sibyl R. Golden
James Goodrich and Judy Goodrich
Mr. and Mrs. George W. Gowen
Mary Graetzer
James Guidera and Edward Parran
Mr. and Mrs. James W. Harbison, Jr.
John A. Hargraves and Nancy S. Newcomb
Mr. and Mrs. David Hathaway
Mr. and Mrs. Morrison H. Heckscher
Harry H. Hill/H.H. Hill Realty Services, Inc.
Steven Holl
Mr. and Mrs. Thomas Hubbard
Anne E. Impellizzeri
Marvin Israelow and Dorian Goldman
Mr. and Mrs. Klaus Jacob
Jan Hird Pokorny Associates, Inc.
Ernest Kafka and Barbara P. Kafka
Kaplan Family Foundations
Valerie Kay
Joseph Kazlauskas
Peter L. Kennard
Martin Kenner and Camilla Smith
Jami Kibel and Michael DeCola
Kirchhoff-Consigli Construction
Management, LLC
Emily J. Klein and Thomas Sugiura
Jennifer C. Krieger and Eric Siegel
Mr. and Mrs. Rudolf Laager
John F. Lambros and Karen Duffy
Alison and John Lankenau
A. Floyd Lattin and Ward L. Mintz
Robert Laurie/
The Marilyn & Bob Laurie Foundation, Inc.
Geraldine and Kit Laybourne
Mr. and Mrs. Lou Lewis/Lewis & Greer, PC
Isabel Livingston
Lovinger Family Foundation
Mr. and Mrs. Douglas S. Luke
Mr. and Mrs. Peter L. Malkin/
The Malkin Fund
Mr. and Mrs. Michael J. Mandel
Mr. and Mrs. Brice Marden
Marist College
David J. Marshall
Mr. and Mrs. Claudio Marzollo
The May Foundation
David and Nanci McAlpin and Family
Dr. Michael R. McGarvey
Robert and Elisabeth McKeon
Mr. and Mrs. Jason McManus/
DJ McManus Foundation
Mr. and Mrs. C. Edward Midgley
Peter Nimmer
Will Nixon
Wilhelm E. Northrop
Francesca Olivieri and Christopher White
Kip Bleakley O'Neill
William Oris and Jeanne Murphy
Mr. and Mrs. Frederick Osborn III/
Easter Foundation
Mr. and Mrs. Richard H. Pennington, Jr.
Mr. and Mrs. Charles E. Pierce, Jr.
William A. Plapinger and Cassie Murray
Michael and Barbara Polemis
Richard and Susan Randolph
George and Gail Hunt Reeke
Chris and Leslie Regan

Peter J. Regna
Erin Thérèse Riley and John M. Garesché
Prof. and Mrs. Nicholas A. Robinson
Margaretta F. Rockefeller
Christopher du Pont Roosevelt
Steve Rosenberg and Debi Duke
Ratul Roy
Mr. and Mrs. Richard J. Schwartz
Charles Shanok/Shanok Foundation
Richard T. Sharp
Anne Sidamon-Eristoff
Silver Realty, LLC
Anne-Katrin Spiess
Steel House Restaurant
Mr. and Mrs. Stuart Subotnick
Anne and Elliott Sumers
Phyllis Taylor
Mr. and Mrs. Peter Tcherepnine
J. William Uhrig and Anastasia Vournas
Maris M. Van Alen
Drusilla van Hengel
Hugh and MaryAnn van Hengel
Illiana van Meeteren
Mr. and Mrs. Anthony Viscusi
Mr. and Mrs. Thomas Wasilewicz
Edward B. Whitney and Martha Howell
Mr. and Mrs. Richard Witmer
Mrs. John P. Wort

Gifts of \$500-\$999

Anonymous (12)
Mr. and Mrs. David Arnow
Wayne I. Baden
Bank of New York Mellon Community
Partnership
Mr. and Mrs. Douglas H. Banker
George H. Beane
Douglas Berlin/Berlin Family Fund
Brad/Peck, Inc.
Mr. and Mrs. Garry D. Brewer
Bard and Barbara Bunaes
Sandy Burgess
Stephen F. Byrns and Tom Lollar
Carmelite Communion, Inc.
Claire C. Carter and Peter C. Gould
Clifford P. Case and Karen B. Dubno
Mr. and Mrs. James M. Casey
John and Maureen Clancy
Michael A. Cornman and Patricia L. Mulvey
Elizabeth Cullers
Margaret Davidson
Dennie Davis
Mr. and Mrs. Gonzalo de las Heras
Mr. and Mrs. J. David Dubin
Jean M. Dugan
Mr. and Mrs. Brian H. Dumaine
Mr. and Mrs. Wolcott B. Dunham, Jr.
Valery and Hal Einhorn
Falcon Enterprises Associates, Inc.
Kathleen and Andres Fortino
Dr. Alvin E. Friedman-Kien/
The Alvin E. Friedman-Kien Foundation, Inc.
Friends of Rob Astorino
N. Richard and Monique Gershon
Lori Gottschalk
Jan and Lester Greenberg
Marc Habert
Bruce D. Haims and Judith Jackson
JoAnn Hanson
James Hardin

Henry and Linda Harnischfeger
Ryan Hart
Keith Helmetag
The Henry L. and Grace Doherty Charitable
Foundation, Inc.
Mr. and Mrs. Howard M. Holtzmann
Hilary Huntington
Joan M. Hutchins
Margaret Innerhofer
Ira M. Resnick Foundation, Inc.
Anita and Robert Jacobson/
Benjamin Jacobson & Sons Foundation
Mr. and Mrs. William C. Janeway
Burton R. Kassell
Jean L. Knowles-Hedlund/Kenwood Foundation
Thomas Konrad
Gretchen Long
Virginia and John Loughlin
Linda J. Luca
Mr. and Mrs. Thomas P. Maginnis
Mathews Nielsen Landscape Architects, PC
Ken Morgan and Lindsay Morgan +
Mr. and Mrs. William F. Morrill
John David Moser
Mountain Tops Outfitters, Inc.
Mr. and Mrs. Kenneth F. Mountcastle, Jr.
Tony Muoser and Sara K. Cashen
Dr. and Mrs. Dennis J. Murray
Hon. and Mrs. Peter Peyser
Joseph H. Pierson and Anne H. Straton
Platt Byard Dovell & White
Denise Rempe
David and Susan Rockefeller
Mark F. Rockefeller
The Ross and Karen Williams Fund of the
Community Foundation of Dutchess County +
Jonathan Sandler and Eliud Kauffman
Howard Sherman and Martha Hally
Allan and Julie Shope
Anne Sidamon-Eristoff
Anthony M. Smith
Mr. and Mrs. Jeffrey G. Smith
Peter N. Speliopoulos
Mr. and Mrs. Christopher A. Stack
Edward Esty Stowell, Jr.
Mr. and Mrs. James Sullivan
Elizabeth Swig
Thomas M. Swope
Thursday Club
U.S. Bank Institutional Trust & Custody
Toby Usnik and Harlan Bratcher
Fredrique van der Wal
Ming and Yung Wang
Mr. and Mrs. Walter C. Weissinger, Jr.
Anton F. Wilson
Penelope Wilson
Pamela Yablon and Leonard Yablon

Gifts of \$250-\$499

Anonymous (21)
Dr. and Mrs. James Aisenberg
William M. Alexander and Anne R. Mullin
Nancy Allison and Roger Rosen
Elizabeth Anderson and Joseph Mahon
Mr. and Mrs. Nicholas B. Angell
Jeffrey Anzevino
AT&T Employee Community Giving Program
Michael Barrett +
Myron Beldock and Karen Dippold
George Bianco

Mr. and Mrs. Robert N. Bischoff
Debra W. Blalock and Mr. Russell Frehling
Mr. and Mrs. Edward H.R. Blitzer
Timothy Bontecou and Felicity Banford
Jonathan L. Brandt
Mr. and Mrs. William B. Brannan
Mrs. Walter F. Brissenden
Mr. and Mrs. Joel Buchman
Albert and Brenda K. Butzel
Mr. and Mrs. Mark A. Cane
Ingrid G. Caruso
Cary Institute of Ecosystem Studies
Paul W. Case
Paul Childs
John and Ingrid Collins
Christopher Craig
Ronald Crovisier and Diana Staats
William A. Davies, Jr. +
James W. Davis
Michèle Dominy
Mr. and Mrs. Malcolm S. Dorris
Nancy P. Durr
Stanley J. Dusek
Joel and Arline Epstein
Susan Epstein
Mr. and Mrs. Thomas D. Evans
Gertrude Farrington +
Fats in the Cats Bicycle Club
Mr. and Mrs. John K. Freeman
Friends of Terry Gipson
Gail S. Ganter-Toback
Claudia Ganz
Paul Genega
Mr. and Mrs. Patrick J. Gilmartin
Mr. and Mrs. Paul J. Goldstein
Hon. Clara Louise Gould
Ann Green
Gregory Grunston
Mr. and Mrs. Patrick Hanlon
Jody and Peter Harris
Mr. and Mrs. Glenn E. Higgins
Jack and Bunny Hoffinger
Holy Cross Monastery
Jesse and Abby Johnston
Reuel and Julia Jordan
Mr. and Mrs. Richard Katzman
Charles J. Keller
Thomas H. Kennedy
Adrian and Elizabeth Kitzinger
Mr. and Mrs. James Lessersohn
James N. Levitt
Arlene London
Arthur Lowenstein
Anne P. Mackinnon
Mr. and Mrs. Joel Mandelbaum
Mr. and Mrs. Robert Mangold/
Mangold Plimack Mangold, Inc.
Mr. and Mrs. Albert J. Marchetti
Robert K. Marx
Camille Massey
Mr. and Mrs. Yoshifumi Matsuzaki
M.A. Weatherbie & Co., Inc.
Seth McKee and Ellen Butowsky
Christina Mead
Mr. and Mrs. Guy Merison
Joseph Messing
Edward P. Meyers
M.G. McLaren, PC
Charles Milligan and Henry H. Westmoreland
Patti Mitchell

Elizabeth Monaco and Neil McCarthy
Abraham and Cynthia Ofer
Alessandro and Lara Olivieri
Helen Olson
O. Stephen Paganuzzi and Janine King
John and Miranda Parry
Ann Patty
Clare M. Pierson and Peter Humphrey
Eve T. Propp/
The Eve Propp Family Foundation, Inc.
Meg Rasmussen
Mr. and Mrs. John R. Reese
Resnicow Schroeder Associates, Inc.
Nadine Revheim
David Roady
Thomas P. Ronan
Mr. and Mrs. Gary Rosenberg
Carol E. Rosenthal
Barry Ross and Mary Jean Wyatt Ross
Mr. and Mrs. George S. Rothbart
Alan and Sayada Rothschild
Rishin Roy
Jeffrey Scales
Dr. and Mrs. Justin Scheer/The Justin &
Deborah Scheer Family Foundation, Inc.
John Schmidt and Wendy Conway
Axel and Sara Schupf
David M. Schwartz
Rita and Paul Shaheen
Isaac and Nitza Shamah
Mr. and Mrs. Robert W. Sheehan
Mark Silvestri
Sacha Spector and Daphne Uviller
Jonathan S. Spencer
Monroe W. Spero and Nortrud Spero
John H. Steinberg and Jill Pliskin
Robin Stout and Elise Wagner
Mr. and Mrs. Charles J. Tanenbaum
Thendara Mountain Club
Anthony Thesing
James A. Tilley
Mark Vanwyk +
Theresa Vanyo
Alan Wanzenberg
Mrs. William B. Warren
Kevin J. Weber and Constance M. Kehoe
Allison Whiting and Frederick Schroeder/
Resnicow Schroeder Associates, Inc.
Thomas H. Wiles
Mr. and Mrs. Doug Wilson
Mrs. John G. Winslow
Dave Work
Mr. and Mrs. Michael Zinder

Gifts of \$100-249

Mr. and Mrs. Alan Abelson
Mr. and Mrs. Thomas Accomazzo
Cathy Walbridge Allen
V. Maureen and Charles Andola
Theodore H. Ansbacher
Lori Arthur
Mr. and Mrs. Ronald R. Atkins
Sheila Baird
Therese Balagna
Mr. and Mrs. Harry W. Baldwin
Mr. and Mrs. Richard Baratta
Joan Barenholtz
Amy E. Barton
Holly Evarts Bartow and Clarence C. Bartow
Cecily Bastedo

Mrs. Lewis K. Becraft
Ronnie Berish
Jutta and Hans Bertram-Nothnagel
Mr. and Mrs. Mihir Bhattacharya
Marvin Birnbaum
John Bliss
Laurel Blossom
Ellen Boardman
Mr. and Mrs. Robert E. Boesch
Mr. and Mrs. David Bondy
Mr. and Mrs. David N. Borton
Mr. John W. Bossung, Sr.
Mr. and Mrs. Richard B. Botjer
Gwendolyn Bounds
Mr. and Mrs. William E. Boyce
Todd C. Bradbury
Mr. and Mrs. Martin I. Bresler
Paul Breslin
Elyse Arnow Brill and Joshua Arnow
Andrew N. Brody
T. Robins Brown and Kieran Quinn
Sue and Lenny Bussanich
Mr. George H. Buttler
Debra L. Campbell
Mr. and Mrs. Malcolm O. Campbell
Karen and Jacques Capelluto
Mr. and Mrs. Ronald L. Carleton
Nancy Carmichael and Michael Washburn
Katrina Cary and Manu Bammi
Philip and March Cavanaugh
C. Drekovic, Inc.
James F. Challey
Wally L. Chambers
Katharine M. Chapman/
Chapman Family Fund
Mr. and Mrs. Mark A. Chertok
Lubomir J. Chmelar
Raymond Chow
Stacy Christensen
Mr. Paul Ciminello
Mr. and Mrs. Bruce E. Clark
Ted Coeyman
Marie Cole
David and Vivien Collens
Constance J. Collins
Anthony Coneski
Edna Conway
Mr. and Mrs. Kenneth E. Cool
Cortlandt Watch, Inc.
Thomas D. Cowan
Christian R. Cullen
Cuney Group Limited
David Cunningham
Eileen C. Curran
Patricia Daly and Henry F. Schreiber
Julia E. Damkoehler
Elizabeth A. Daniels
Sandra Danoff
Wanda A. Davenport and Martin Cohen
Mr. and Mrs. Scott E. Davies
Mr. and Mrs. Richard J. Davis
Nicholas A. De Stefano
Patricia DeCarmine
Mr. and Mrs. Joel Dictrow
Patrick K. Donahue
Rev. and Mrs. Herbert Donovan
Stancy DuHamel
Mr. and Mrs. Joe Duke
Mr. and Mrs. Daniel Eagan
E. Allan Eggleston

Joanne Elliott
Mr. and Mrs. Carl Ellman
Hiram Emery
Laura Etchen
Thomas and Kathryn Farmen
Rudolph Fasciani
Elizabeth Faulkner
Steven Ferlauto
Sandra K. Fila
Tracy and Dave Finn
David R. Fitzjarrald and L. Gwen Spicer
Elizabeth Fitzpatrick
Kevin Flaherty
Maggie Flanigan and Richard Dow
Mr. and Mrs. Dennis P. Flood
Judith Foster and David V. Foster
Jason Frankel
Andrew L. Frey
Mr. and Mrs. William Frey
Dean Gallea
Ted Gass
Mr. and Mrs. Ronald R. Gauch
Emil J. Geering
Joyce Gelb
Libbie F. Gerry
Naola-Beth Gersten-Woolf
Mrs. Thaddeus J. Gesek
Theodore Gewertz
Mr. and Mrs. Michael Gibbons
Suzanne A. Gillespie
Mr. and Mrs. Floyd S. Glinert
Paula Glucksman
Mark and Leslie Godridge
Suzanne P. Gold
Edward Goldberg and Barbara Saidel
Ron G. Goldman and Julia Goldman
Perry Goldschein
Dr. and Mrs. Lee S. Goldsmith
Mr. and Mrs. Arnold P. Goodman
James J. Greene
John A. Griesemer and Ardith Orr
Mr. and Mrs. Thomas G. Griffen
Edward H. Grossman
Mr. and Mrs. Stanley J. Grubel
Lori Gruber
Mr. and Mrs. Andrew F. Gurley
Richard Haas
Mr. and Mrs. Jerome Haims
Marten J. Halma
Charlotte Hamlin
Gary Handel and Loretta Villani
Harold S. Coleman & Marian B. Coleman
Charitable Foundation, Inc.
William L. Harris and JoAnne Simon
Timothy Hartung and Holly T. Ross
Richard Hausner
Mr. and Mrs. Eliot D. Hawkins
Jane and Larry Garrick
Susan Hereth
Paul Hesse
Charles D. Hewett, Jr.
Bente Hirsch
Mr. and Mrs. Allan E. Hoerup
Lois Hoffman
Mr. and Mrs. Robert L. Hoguet III
Mr. and Mrs. Sigmund Holtz
Mr. and Mrs. Roger W. Hooker
Mr. and Mrs. Joseph C. Hoopes, Jr.
James L. Hoover
W. Jean Horkans

Drusilla Plunkett Hose and M. Ryan Hose
Pamela Howard
Margaret C. Howe
Janet S. Hutchings
Nathaniel A. Jackson
Rene Jacobus
Michael Jacoff
Mr. and Mrs. Glen Johnson
Wendy N. Jones
Julie H. Jordan
Terry Joshi
E. William Judson
Mr. and Mrs. Lee S. Kalish
Dr. and Mrs. D. Evan Kanouse
Howard Kaplowitz
David A. Katz and Cecilia Absher
Mr. and Mrs. Robert Katz
Brian Keating
Sarah L. Kennedy and Marian Pompa
Joseph and Jill Rae Kiernan
Marcia Kimpton
Aleta Kinley
Richard M. Kleinhenz and Linda M.
Kleinhenz
Christopher and Claudine Klose
Michael Knutson
Elizabeth P. Kohn
Henryka Komanska
Stanley and Dorit Kramer
Gail Krein
Mr. and Mrs. Lars I. Kulleseid
Gary and Edna Lachmund
Sally L. Lake
Susan Lally
Mr. and Mrs. Robert T. Lang
Mr. and Mrs. Russell C. Lange
Christina M. Lawes and Colin C. Frost
Michael J. Lawton
Mr. and Mrs. Benjamin C.P. Lee
Cavin P. Leeman
John Leguizamo
Margaret M. Lenci
Bonnie G. Le Var
Mr. and Mrs. Philip J. Levine
Julie P. Lewis
Kim E. Lewis
Peter C. Lincoln
Barbara Lindsey
Rae Linefsky
LI/Saltzman Architects, PC
Mr. and Mrs. Richard Livingston
Maryann Loiacono
Michael Lokensgard
Mr. and Mrs. Joel London
Thomas E. Lovejoy
L.H. Lumey
William L. Lupatkin and Julie T. Lupatkin
Patrick Lynch
Mr. and Mrs. Robert L. Mahar
Shawn P. Maher
Frank J. Mammone
Bonnie and Thomas Mangiaracina
Barbara Mann
Maple Leaf Associates, Inc.
Mr. and Mrs. William T. Maple
Lucy W. March
Mr. and Mrs. Francis H. Margesson
Ken Margolies
Michael Marion
Langdon Marsh

Mr. and Mrs. St. Clair M. Marshall
Mr. and Mrs. Jerome S. Marton
Patricia Maxwell
Lowell Mazie
Charles and Debra McCambridge
Eileen McComb
Mr. and Mrs. Douglas S. McCorkle
Carole S. and David D. McDermott
Anna McDonnell
Cornelia McDougald
Mr. and Mrs. Daniel McEvoy
Charles McLaughlin
Margo McLoone
Mr. and Mrs. Lawrence Merson
John C. Mesch
Michael Meskin
Teresa Metcalf
Heino F. L. Meyer-Bahlburg
Mr. and Mrs. Roger A. Michaels
Laura Middleton
Richard Milazzo and Joy Glass
Deborah S. Mintz
Timothy Moag and Sarah Noble Moag
B. Ruth Montgomery
Frances J. Moore
J. Malcolm Morris
Robert C. Murray
Andrew Napp
J. Henry Neale, Jr.
Mrs. John C. Newington
Blake T. Newton III
Patricia Newton
Steven L. Nissen
Heidi Nitze
John and Marcy Noble
David Norris
Thomas Novak
Amy M. Novatt and Ronald D. Whitmont
Dr. and Mrs. Thomas E. Nyquist
Patricia O'Donnell
Michael Olivieri
Dennis and Kathleen O'Neill
Mr. and Mrs. Peter Oswald
David Overholt
Waldo Pagunsan
Robert Paley and Leslie E. Schneier
Carl Parris and Ann L. Moring
Ann Pascetta
Mr. and Mrs. Robert G. Peck
Margaret Pierpont
Meta V. Plotnik
Mr. and Mrs. Joseph T. Plummer
Harvey Podolsky
Mr. and Mrs. Robert J. Polastre
Mr. and Mrs. David L. Posner
Christopher and Jennifer Post
Mr. and Mrs. Clifford Powell
Martin R. Prince
Mr. and Mrs. Frederic P. Putnam
Barbara Quint
Douglas A. Raelson and Jane S. Arnold
Susan D. Ralston
Remak Ramsay
Mr. and Mrs. John F. Rathgeber
Robert Regan
Judy Reichler
Mr. and Mrs. Richard J. Reisert
Mr. and Mrs. Sol J. Resnikoff
Jane A. Restani
Kenneth M. Rhodes

William L. Richardson
Lynn Richmond
David and Jennifer Rimmer
Mr. and Mrs. Albino M. Rocchi
Rock and Snow, Inc.
Richard D. Rockwell
Matthew F. Romanelli
Thomas A. Romich and Max Friedman
Mr. and Mrs. Timothy S. Rothermel
Howard Rothstein
Victoria Rougeot
Paul Russell
Judith Ryan and William Ryan
Jeffrey Sachs
Emma Lou Sailors
Robert C. Samuels
Odd E. Sangesland
William Sarokin
Gregory Sauter
James Schamus and Nancy Schamus
Tori Schirmer
Paul Schlender
Dr. and Mrs. Michael H. Schmidt
Mr. and Mrs. Joseph Schoenberg
Laurie Hirsch Schulz and Jay D. Schulz
Noel P. Schulz
Mr. and Mrs. David S. Schwartz
Raphael Schwartz
George B. Scribner
Janet Seaman
Mr. and Mrs. Luke J. Sears
Arthur J. Semetis
Jack Shainman
Karen M. Sharf
Elizabeth Sidamon-Eristoff and Hunter Lewis
Patricia J. Singer
Mr. and Mrs. Ronald Singer
Jennifer A. Sipple
Mr. and Mrs. Peter Sirusas
Sisters of St. Joseph of Peace
Carol L. Sloan
Mr. and Mrs. James Smith
Jane Simkin Smith
Jeremy Smith
Kathryn A. Smith
David A. Souers and Linda Souers
Mr. and Mrs. Joseph W. Spalding II
John J. Sparacio
Judith Spektor
Pearl Spiro and Daniel Morrison
Gretchen Stearns and Richard B. Weininger
Dirk and Michelle Vander Sterre
Vicki C. Steinhardt
William and Gwendolyn Stevens
Christin Stockton
Harry Sunshine
James A. Suprenant
Dr. and Mrs. Gary H. Swalsky
Herbert R. and Barbara D. Sweet
Wylie and Sallie Sypher
Mark Tabakin
Frederick L. Taber
Stephen W. Tator
Barbara Joyce Torpie
Jan H. Trachtman
Clifford Tuel
Russell and Wendy Urban-Mead
Mr. and Mrs. Philip K. Van Itallie
Eva Van Rijn
Bronson and Mary Lynn Van Wyck

Alan R. Viani
Gary von Bieberstein
Mr. and Mrs. A.H. Von Mechow
Mr. and Mrs. Jeff Walsh
Nancy Ward
Katy Moss Warner
Jane A. Waters
Mark Watkins
Robb Webb and Pat DeRousie-Webb
Susan F.C. Weil
Elizabeth H. Weinshel and Joel P. Goldfarb
Mr. and Mrs. Myles Weintraub
Karen A. Wellwood
Karen and Ronald Wertheimer
Mr. and Mrs. Kenneth Wildonger
Annette Wilkus
Winston School
Mr. and Mrs. Robert F. Wiseman
Rebecca Wisniewski
Alexandra H. Woods
Donald J. Yanulavich
Jeanne T. Zenker
Louis Zicari

Gifts-in-Kind

Chris Ancliff, harbor master,
Beacon Sloop Club
André Balazs Properties
Dean Anderson/Super Square Corp.
Anzevino Photography
ARO
Atlantic Kayak Tours, Inc.
Back Street Pub
Badey & Watson Surveying & Engineering, PC
Bank Square Coffeehouse
Barclays Capital
BariisWedlick Architects LLC
Carolyn Marks Blackwood
Harlan Bratcher and Toby Usnik
Brooks & Brooks, PC
William Burback
Leonora Burton
C&G Partners, LLC
Constitution Marsh Audubon Center &
Sanctuary
Crawford & Associates Engineering and
Land Surveying, PC
Malcolm Daniel
Debevoise & Plimpton, LLP
Derek Dempsey
Jane Dodds
Dominican Sisters of Sparkill
Michael C. Duffy
Dutch's Spirits
Fats in the Cats Bicycle Club
Jerry Freedner
Friends of Historic Kingston
Sandy Gellis
Scott Guerin
Chris Hatfield/Hatfield Metal Fabrication, Inc.
Keith Helmetag
Harney & Sons Fine Teas
Holistic Cassandra
Harold Holzer
Hudson Chocolates
Hudson Highlands Land Trust
Hudson Opera House
Hudson River Ventures
Hudson Valley Harvest
Hudson Valley Outfitters

Bill Jeffway
Kellar Kellar & Jaiven
Kirchhoff-Consigli Construction
Management, LLC
Tim Kleeger
Chad Kleitsch
T. Arron Kotlensky
Jonathan Kruk
Rick and Joe Kunkel/Viking Iron Works
Amy Lahey
David La Spina
Lavelle & Finn, LLP
Law Office of Shawn Pratt
Law Offices of Stephen J. Small, Esq., PC
Annie Leibovitz
Levien & Company, Inc.
Li-Saltzman Architects, PC
Eric Lindbloom
Little Stony Point Citizens Association
The Locusts-on-Hudson
Scott P. Longstreet, Esq.
Mahoney's Irish Pub
Maple Leaf Associates
Tanya Marcuse
Mariner's on the Hudson
Marist College
Patrick E. Martin/
Michigan Technological University
Mathews Nielsen Landscape Architects, PC
McGrath & Co.
Charles McKinney
W. Patrick McMullan
McNamee, Lochner, Titus & Williams, PC
Kate Menconeri
Meyer Contracting Corp.
Greg Miller
Morrison & Foerster, LLP
Mountain Tops Outfitters
The Municipal Art Society of New York
Stefan Nagel, Esq.
New Central Baptist Church
The Nyack Library
Our Lady of Mount Carmel, Poughkeepsie
Paggi Martin & Delbene LLP
Peekskill Brewery
Plass, Rockefeller & Nucci, LLC
Putnam History Museum
Rapport Meyers, LLP
Red Cap Cleaners
David and Jeannette Redden
Reed Hilderbrand, LLC
Rich Hines & The Hillbilly Drifters
Riverview Baptist Church
Robert Rodriguez, Jr. Photography
Royal Carting
Carl, Charley and Sammy Rusk
Sacred Space Studios
Santo Associates Land Surveying and
Engineering, PC
Scott Cullen, Jenkinstown Motors
Sea Tow Central Hudson
Shadows on the Hudson
Sherwood's Power Equipment
Michael Sibilia
Sneeringer Monahan Provost Redgrave Title
Agency, Inc.
Joseph Squillante
Starbucks in Kingston
Steel House Restaurant
Stikeman Elliott, LLP



Sullivan & Cromwell LLP
Teatown Lake Reservation
Tsao & McKown Architects
Turner Construction Company
Twin Maple Farm
Ulster County Arts Council
Veith Electric
Dawn Watson
Robert Welsch/Westover Landscape Design
Wheel and Heel
Susan Wides
Dar Williams
YogaWorks

Gifts in Memory of

Doris Brenner
William Englert
Charles M. Fales
Jeanne and Bob Nelson
Cushing B. and Rosalie H. Snider
Frances S. Reese
John and Elise Stein

Gifts in Honor of

Mr. and Mrs. Thomas C. Barron
Peter Boodell
Norman Christ
Gary Glynn
Colin Hambling
Suzanne Hamlin
David N. Redden
Parker MacVeigh Regan
Hilary Russell
Adrian Smith and Lee Weiskott
JoAnn Waldorf

Participating Matching Gift Companies and Foundations

Arch Reinsurance Group
AXA Foundation
Bank of America Matching Gift Program
Benjamin Moore & Co.
Capital Group Companies Charitable
Foundation
Chevron Humankind Chevron Corporation
Chubb & Son, Inc.
Deutsche Bank Americas Foundation
GAP Foundation Gift Match and Money for
Time Programs
Goldman, Sachs & Co.
Grainger
IBM Corporation
Johnson & Johnson Family of Companies
The Moody's Foundation
Pfizer, Inc.
The Prudential Foundation
Quaker Chemical Corporation
Reader's Digest Foundation
Steelcase Foundation
Teleflex Foundation
USAA
Visa Employee Matching Gift Program

Scenic Hudson, Inc.

One Civic Center Plaza, Suite 200
Poughkeepsie, NY 12601-3157
845 473 4440 • www.scenic Hudson.org
Scenic Hudson, Inc., is a charitable, nonprofit corporation
classified by the Internal Revenue Service as a publicly
supported tax-exempt organization under Section 501(c)(3)
of the Internal Revenue Code. A copy of the latest
financial report may be obtained by writing to Scenic
Hudson, Inc., or to the New York State Attorney General's Office,
Charities Bureau, 120 Broadway, New York, NY 10271.

PHOTOGRAPHS

Robert Rodriguez, Jr.
www.robertrodriguezjr.com
Cover, pp. 4, 5, 6, 8, 10, 11 (top, bottom 1,
3), 15 (top 2, 4), 18, 20
Michael Weaver p. 7 (top 1); Barb
Stephens p. 7 (top 3); Ann Rafalko p. 7
(top 4); Amy Wallace p. 7 (bottom 3);
Courtesy Thomas Cole National Historic
Site p. 7 (bottom 3); Anthony Coneski p.
7 (bottom 4); Seth Martel pp. 9, 12, 13;
Susan Hereth p. 11 (bottom 2, 4); Jason
Taylor pp. 14, 16, 17; Josh Clague p. 15
(top 1); © Buck Ennis/Crain's New York
Business p. 15 (bottom 2); Eric Whiting p.
19 (bottom); Jeff Anzevino p. 21 (4).

Copyright © 2013 Scenic Hudson, Inc.
Written/Designed by Scenic Hudson staff

Printed at Fort Orange Press in Albany, NY, using vegetable-
based inks on acid- and elemental chlorine-free paper
from well-managed forests run according to principles in
full respect for high environmental, social and economic
standards at all stages of production.



Board of Directors The following board members served during the fiscal year ending June 30, 2013

Scenic Hudson Officers and Directors

James C. Goodfellow Chairman
Chairman, Fiduciary Trust Company International

Lisina M. Hoch Vice Chair
Honorary Life Trustee, The Asia Society; Honorary Trustee, Woods Hole Oceanographic Institution; Fellow, The Explorers Club

James Clark Treasurer
Co-Chief Investment Officer, Pine River Capital Management

Francesca Olivieri Secretary
Green Living Consultant

Phyllis Taylor Assistant Secretary
Executive Vice President and General Counsel, Battery Park City Authority

Irvine D. Flinn Assistant Secretary
Senior Counsel, Sullivan & Cromwell LLC

Raoul Bhavnani
Senior Managing Director, Global Affairs, FTI Consulting

Christopher Buck
President, The Peter and Carmen Lucia Buck Foundation

Sean Eldridge
President, Hudson River Ventures

Sarah A. W. Fitts
Partner, Debevoise & Plimpton, LLP

Carlos A. González
Director of Client Asset Management, Oriental Group

Marjorie L. Hart
Principal, Business Line Consulting Company

Klaus Jacob
Senior Research Scientist, Lamont-Doherty Earth Observatory of Columbia University

Merit E. Janow
Professor, International Economic Law & International Affairs; Director, Program in International Finance & Economic Policy, Columbia University

Susan Livingston
Partner, Broun Brothers Harriman

Eileen McComb
Brand Ambassador, Benjamin Moore & Co.

Judith McHale
President and Chief Executive Officer, Cane Investments, LLC

Zack McKown
Co-founding Partner, Tsao & McKown Architects

W. Patrick McMullan
Managing Director and Head of U.S. Healthcare Investment Banking, Barclays Capital

Elizabeth D. Moore
General Counsel, Con Edison and CECONY

David K.A. Mordecai
President, Risk Economics Limited, Inc.

David H. Mortimer
President, The American Assembly

Sheila Platt
MSW Clinical Social Worker

Rudolph S. Rauch III
Former Managing Director, Opera News

David N. Redden
Vice Chairman, Solbeby's North & South America

Alexander Reese

Frederic C. Rich
Partner, Sullivan & Cromwell LLC

Simon Roosevelt
Olimpia Fund Management, Ltd.

Leigh Seippel

The Scenic Hudson Land Trust Officers and Directors

Frederic C. Rich* Chair

James Clark* Vice Chair and Treasurer

Simon Roosevelt* Secretary

Ned Sullivan Assistant Secretary

Robert P. Freeman
Senior Managing Director, Greyfields Investors, LLC

Kristin Gamble
President, Flood, Gamble Associates, Inc.

Gary A. Glynn
President and Chief Investment Officer (retired), U.S. Steel and Carnegie Pension Fund

James C. Goodfellow*

Marjorie L. Hart*

W. Patrick McMullan*

David H. Mortimer*

Leigh Seippel*

Dawn Watson
Former Principal, Averdale International; Director, Davada Foundation; Owner, Dawn Watson Photography

Wheelock Whitney III

Julia Harte Widdowson

President's Council of Advisors

Bruce Babbitt

Andrea Soros Colombel

Peter J. Davoren

Judith LaBelle

Frank Martucci

Elizabeth J. McCormack

Mark Ordan

James H. Ottaway, Jr.

Tom Secunda

Jennifer Speers

Honorary Directors

Robert H. Boyle

Anne P. Cabot

Nash Castro

William M. Everts, Jr.

George W. Gowen

Barnabas McHenry

Samuel F. Pryor III

Elizabeth B. Pugh

Laurance Rockefeller

David Sive

Alexander E. Zagoreos

Non-Board Committee Members

Robert Bourque Public Policy Committee

Betsy Gile Investment Committee

James Tripp Public Policy Committee

Maarten van Hengel Investment Committee

Staff The following are our staff members as of October 2013

President

Ned Sullivan
President

Anna Tetrault
Executive Assistant to the President

Program Staff

Steve Rosenberg
Senior Vice President; Executive Director of The Scenic Hudson Land Trust, Inc.

Bethe Myers
Executive Assistant

Conservation Science

Sacha Spector
Director of Conservation Science

Dan Sorensen
Natural Resources Coordinator

Land & Conservation Easement Acquisition

Seth McKee
Land Conservation Director

Lee Alexander
Senior Land Project Manager

Kelly Boling
Senior Land Project Manager

Dennis Heinz
Land Stewardship Coordinator

Michael Knutson
Conservation Easement Manager

Matt Shipkey
Senior Land Project Manager

Nava Tabak
GIS and Land Resources Analyst

Kim Tiller-Cook
Administrative Assistant

Cari Watkins-Bates
Assistant Land Conservation Director

Jason Winner
Conservation GIS Manager

Land Use Advocacy

J. Jeffrey Anzevino
Director of Land Use Advocacy

Hayley Carlock
Environmental Advocacy Attorney

Mark Wildonger
Senior Planner

Long Dock Beacon

Margery Groten
Senior Project Manager

Parks & Preserves

Rita Shaheen
Director of Parks

Kate Brill
Education Outreach Coordinator

Geoff Carter
Parks and Stewardship Manager

Anthony Coneski
Parks Event and Volunteer Coordinator

Kate Kane
Park Planner

Carley Kiernan
Parks and Trails Coordinator

Joseph Kiernan
Construction Coordinator

Meg Rasmussen
Senior Park Planner

Laura Sumner
Administrative Assistant

Public Policy

Andy Bicking
Director of Public Policy

Althea Mullarkey
Public Policy Analyst

Communications

Jay Burgess
Director of Communications

Corie Davis
Administrative Assistant

Seth Martel
Graphic Designer

Reed Sparling
Writer

Jason Taylor
Publications and Web Manager

Development

Erin Thérèse Riley
Vice President for External Relations

Ilana Charette
Individual Giving Assistant

Jody Harris
Events Manager

Margaret A. King
Senior Manager for Foundation and Corporate Relations

Patti Mitchell
Administrative Assistant

Veronica Renzo
Database Coordinator

Diane von Roesgen
Individual Giving Manager

Karen Wellwood
Development Associate and Grants Writer

Operations & Finance

Joe Kazlauskas
Chief Finance and Operations Officer

Robin Elliott
Accountant

Gail Krein
Executive Assistant

Theresa Vanyo
Human Resources Director



* Board member of both Scenic Hudson and The Scenic Hudson Land Trust

